

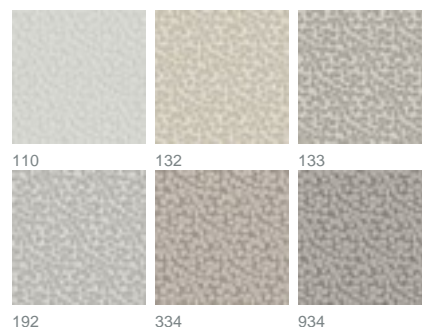
PRODUCT DATASHEET

Shiloh 1692 / 132

COLLECTION SLOW LIVING








colours



fabric width (cm) 285

material 100% polyester

transparency opaque fabric

care instruction     

characteristics   

suitable for 

Repeat width 21

Repeat height 34

description

SHILOH: a small pattern with a major impact. Voluminous, dense and woolly in its look and to the touch, the Yescquard in a leaf design takes the rush out of everyday life in six calming colours.

Legende

 flame retardant

 Light fastness

 Lead weight

 thermo fabric


 dim-out fabric

 Protects against viruses as well as bacteria, microorganisms, mold

 Curtains

 Drapery fabric

 Upholstery

 Roman blind with transparent rods/vertical tape

 Roman blind with Tucks/Wave effect

 CoverTex wall covering

PRODUCT DATASHEET

ADO
Goldkante



Washing and ironing
shrinkage



and fungi
recycling



Panel curtain