

# **PRESS RELEASE: ADO GOLDKANTE COLLECTION GET TOGETHER**

**ADO**  
Goldkante



**ADO Goldkante - a high-quality German brand for sophisticated, contemporary and authentic home textiles that's steeped in tradition - combines dependability and emotionality.**

As a result of the ongoing pandemic - and everything it involves - our lives have come to revolve around our homes much more. Making our homes cosy and comfortable makes us feel fulfilled, harmonious and at ease. At the

same time, we are reminded of how important everyday social interactions really are to us. We miss our wider family, friends and their embraces. The GET TOGETHER collection taps into this sense of longing and is an expression of joie de vivre, conviviality and community. The days of garden parties, family celebrations and joyful times spent together will soon return - and when that happens, we'll relish and cherish them more than ever before.



## SKYFALL 1182

SKYFALL – an intricate fabric inspired by a love of nature. Thanks to its melange look and texture, all 20 shades in its comprehensive colour palette evoke a natural wool aesthetic – a classic in sophisticated interior design. The easy-care FR polyester fibres make the fabric permanently flame-retardant. That means it fulfils all conventional fire standards for use in commercial settings and is thus a true tour de force.

*Woollen look and feel, delicate colour melange, textured plain fabric, light decorative fabric, translucent, permanently flame retardant, 100 % PES FR, fabric width: 300 cm, 3 shades*



## NEW MOON DIMOUT 1301

NEW MOON DIMOUT – available in a remarkably elegant quality – allows rooms to be dimmed as if it were the deepest darkest night. Its refined, shimmering satin surface gives it a particularly sophisticated and striking radiance. Its soft feel and hanging pleats open up a wide array of decorative options. Available in 25 homely colour schemes ranging from white right through to deeper, more intense shades, anyone can find the right colour to fit harmoniously into their interior design. The degree of dimming changes depending on the colour depth. NEW MOON DIMOUT is permanently flame-retardant and can even shine in commercial settings like schools, meeting rooms and hotel rooms.

**Please note:** The two lightest shades (110 and 200) do not feature the dimming weft system.

*Semi-glossy satin, plain, opaque decoration fabric, dimout function, permanently flame retardant, 100 % Trevira CS, fabric width: 300 cm, 25 shades*







## BREAKING DAWN DIMOUT 1302

BREAKING DAWN DIMOUT guarantees a perfectly dimmed bedroom throughout the night and beyond. Its homely texture and colour melange, which evokes natural linen, is simply intoxicating. Its soft feel and flawless hanging pleats are equally enticing. 18 balanced, nature-inspired colour schemes are sure to enhance the relaxed atmosphere in any room, whether it's at home or in a commercial setting.

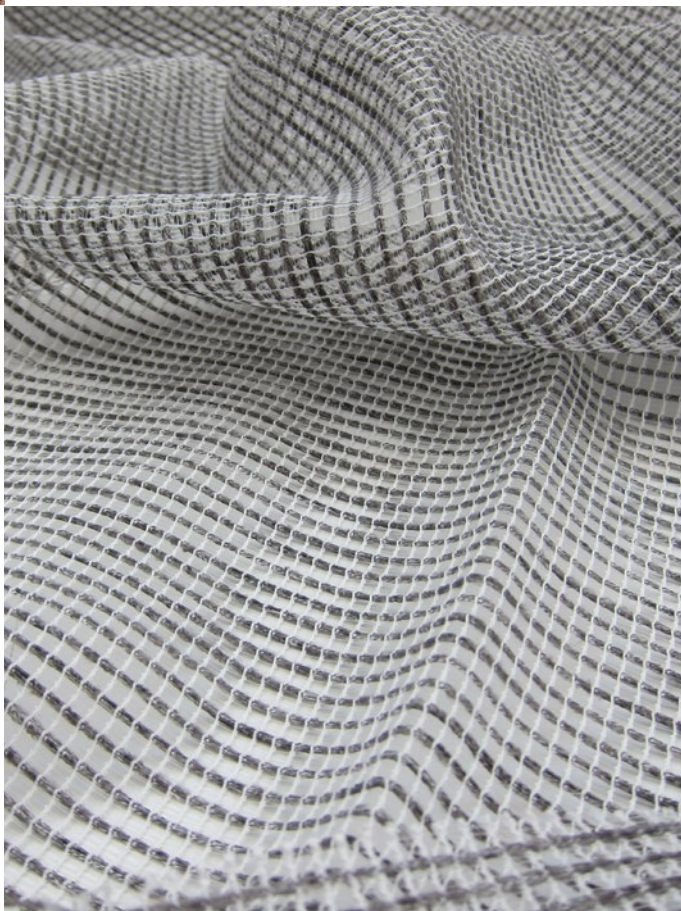
*Highly structured fabric, colour melange, plain fabric, opaque decorative fabric, dimout function, permanently flame retardant, fabric width: 300 cm, 100% PES FR, 18 shades*



## SID 3441

SID wasn't just a true hero and a good friend in Ice Age. This transparent mesh with its homely wool effect allows a lot of light into the room, while always looking striking and decorative thanks to its voluminous effect thread. It's available in five timeless non-colours, manufactured from flame-retardant thread and flatters any private or public interior design.

*Mesh structure, leno wave, wool effect, melange, transparent fabric, permanently flame retardant, fabric width: 300 cm, 100% PES FR, 5 shades,*







### **DIEGO 3442**

DIEGO is an endearing protagonist, who wins us over with his strong and unique personality. This material too is incredibly charming with its soft, flowing feel. Its bicolour criss-cross look is particularly enthralling – and its transparency and single-colour design is especially pleasant and harmonising. It's easy to clean thanks to its flame-retardant thread made from 100 per cent synthetic material.

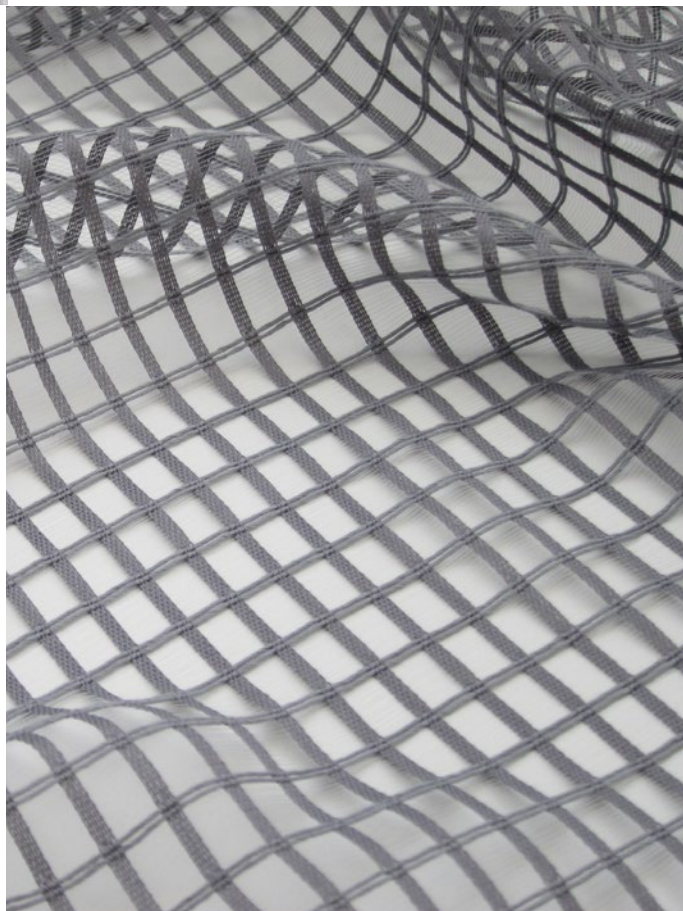
*soft flowing fabric, bicolour, criss-cross, batiste-like plain fabric, transparent fabric, permanently flame retardant, fabric width: 300 cm, 7 shades, 100% PES FR*



### **SCRAT 3443**

SCRAT is a modern take on architect's tulle. Its five colours underscore the timelessness of this classic. The coarse mesh is designed as a leno weave and is therefore easy to clean, non-slip and highly transparent. Its high-quality flame-retardant fibres make it incredibly versatile.

*Architect tulle, leno wave, coarse mesh structure, transparent fabric, permanently flame retardant, fabric width: 300 cm, 5 shades, 100% PES FR*





### DAISY 3444

DAISY makes quite the entrance thanks to its extravagant Scherli contours. Its floral allover design reveals the full extent of its beauty and impact when backlit on a window. Transparency and opaqueness, a jacquard-patterned background and decorative fringes form a harmonious unit. Despite all the design's largesse, the repeat is only 38 cm and is therefore perfect for smaller windows.

*Full fil coupé, floral jacquard fabric, Inbetween, 100% PES, fabric width: 300 cm, 3 shades*

### SPEED 3609

SPEED – a light, airy batiste – is quite simply a classic in interior design. The virtually translucent fabric appeals to the viewer's sense of touch and sight with its incredibly smooth feel and soft flowing drape. The much-loved, simple and strong linen structure meets 19 contemporary colours to liven up any home or commercial setting. Sometimes less really is more.

*Batiste fabric, plain, transparent fabric, permanently flame retardant, fabric width: 290 cm, 100% PES FR, 19 shades*







### LEILANI 8003

LEILANI – the Hawaiian name 'Leilani' is a portmanteau of the words 'lei' meaning flower and 'lani' meaning heavens. It embodies a modern interpretation of a floral lower curtain design consisting of a lush field of flowers and a broad horizon. The soft flowing base fabric of the print pattern flatters every interior and observer in equal measure.

*Digital print, modern floral base design, transparent fabric, 100 % PES, fabric width: 300 cm, 4 shades*

### ANTHEA 8004

ANTHEA opens up an underwater world brimming with flora to the viewer. The contours of the delicately crashed, gauze-like background swim and blur. The four multicoloured colour schemes – aqua/blue/cream, green/light blue/lilac, rust/blue/yellow and olive/grey-blue/brown – on the light semi-transparent base fabric reflect the richness of colours underwater. ANTHEA is a beautiful, light and summery decorative fabric that really comes into its own when placed on a window as a set of curtains.

*Digital print, multicolour, floral design, soft-crash, gauze, transparent fabric, 100 % PES, fabric width: 290 cm, 4 shades*





### **SAMANTHA 8005**

SAMANTHA's modern and contemporary design conveys a stylish Scandinavian vibe. Individual, oversized blades of grass appear to sway, making the viewer feel as if they can hear the rustling of the wind. Delicate, matt structured thread gives the base fabric a natural texture and a pleasantly soft flowing touch.

*Digital print on textured voile, modern grass motif, transparent fabric, 100 % PES, fabric width: 295 cm, 3 shades*

### **LILLIAN 9804**

LILLIAN – a structured burn out par excellence. Its modern abstract leaf design is available in three subtle, natural colour schemes: wool white, green and taupe. The transparent, cottonlike base fabric underscores the natural radiance of this decorative inbetween.

*Burnout, modern floral design, softly structured background, transparent fabric, 83% PES 17% CV, fabric width 290 cm, 3 shades*







**TEXTS AND IMAGES  
CAN BE DOWNLOADED AT**  
[www.ado-goldkante.de/en-gb/press](http://www.ado-goldkante.de/en-gb/press)

Keep up to date   

#### **The company**

In 1954, ADO, which is named after its location in AschenDorf, Germany, was founded by Hubert and Marianna Wulf as a supplier of premium quality curtains and decorative textiles. The 'Goldkante', or golden thread, became a symbol for the quality of this internationally respected German textile specialist. Since 1 January 2013, ADO has been a part of the ZIMMER + ROHDE Group.

#### **ADO Goldkante – for rooms that come to life**

ADO brings textile harmony, a feeling of lightness and pure joie de vivre into your home. Exceptional details, a natural feel and countless transparent effects breathe life into your home and make your dream living space a reality. The wide range of patterns – from urban to natural, elegant to playful – offers the right material for every taste. The textiles also meet the demanding needs of everyday life as they are easy to clean and can be combined in countless different ways – not forgetting the five-year warranty. ADO fabrics are therefore the perfect design partners, in any room and at any stage of life.

#### **For your manufacturer directory:**

ADO Goldkante GmbH & Co KG  
Tel: +49(0) 4962-505-70  
Fax: +49(0) 4962-505-250  
[presse@ado-goldkante.de](mailto:presse@ado-goldkante.de)  
[www.ado-goldkante.de](http://www.ado-goldkante.de)

Press release: ADO Goldkante collection GET TOGETHER  
[www.ado-goldkante.de](http://www.ado-goldkante.de)